

	North York Moors National Park boundary		Proposed Bank Field wind farm ZTV		Minehead and Lady Cross winding towers ZTV
	Cleveland Way National Trail		RAF Flyingdales SSPA radar ZTV		Minehead ,Lady Cross and Lockwood Beck winding towers ZTV
	Sections of route with views to proposed sites		Boulby Mine dryer stack ZTV		Lady Cross and Lockwood Beck winding towers ZTV
	Sections of route with filtered views to proposed sites		Minehead winding towers ZTV		Minehead and Lockwood Beck winding towers ZTV
	Table reference number (see Part 5, Appendix 22.3)		Lady Cross Plantation winding tower ZTV		Tocketts Lythe and Lockwood Beck winding towers ZTV
	Representative viewpoints (underline denotes photomontage location) (see Part 5, Appendix 22.2)		Lockwood Beck winding tower ZTV		Minehead and Tocketts Lythe winding towers ZTV
			Tocketts Lythe winding tower ZTV		

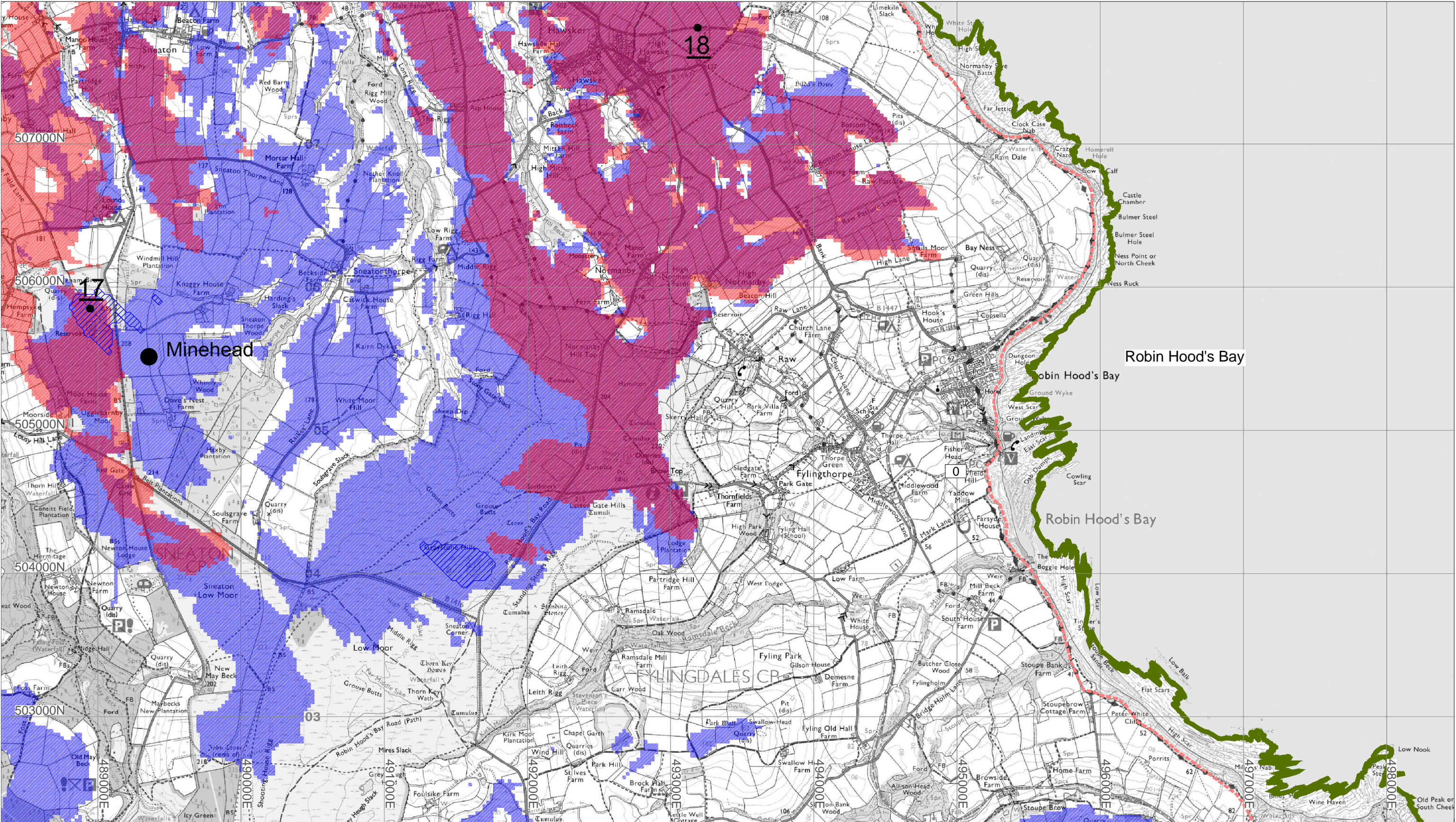
Project:	York Potash Project Cumulative Landscape & Visual Assessment
Drawing Title:	Sequential Receptor Assessment Cleveland Way National Trail (1 of 8)
Drawing Number:	2327.SEQ.CW.01
Revision:	00
Scale:	1:25,000 @ A3
Date:	September 2014
Drawn:	CW
Checked:	SW
This drawing is copyright and should not be used, amended or reproduced in any form without written consent.	

Key Plan:

Estell Warren Ltd  
5b Chevin Mill  
Leeds Road  
Otley  
LS21 1BT  
Tel: 01943 464384  
Email: mail@estellwarren.co.uk  
Web: www.estellwarren.co.uk

Landscape Architecture  
  
A Sirius Minerals project





	North York Moors National Park boundary		Proposed Bank Field wind farm ZTV		Minehead and Lady Cross winding towers ZTV
	Cleveland Way National Trail		RAF Fylingdales SSPA radar ZTV		Minehead, Lady Cross and Lockwood Beck winding towers ZTV
	Sections of route with views to proposed sites		Boulby Mine dryer stack ZTV		Lady Cross and Lockwood Beck winding towers ZTV
	Sections of route with filtered views to proposed sites		Minehead winding towers ZTV		Minehead and Lockwood Beck winding towers ZTV
	Table reference number (see Part 5, Appendix 22.3)		Lady Cross Plantation winding tower ZTV		Tocketts Lythe and Lockwood Beck winding towers ZTV
	Representative viewpoints (underline denotes photomontage location) (see Part 5, Appendix 22.2)		Lockwood Beck winding tower ZTV		Minehead and Tocketts Lythe winding towers ZTV
			Tocketts Lythe winding tower ZTV		

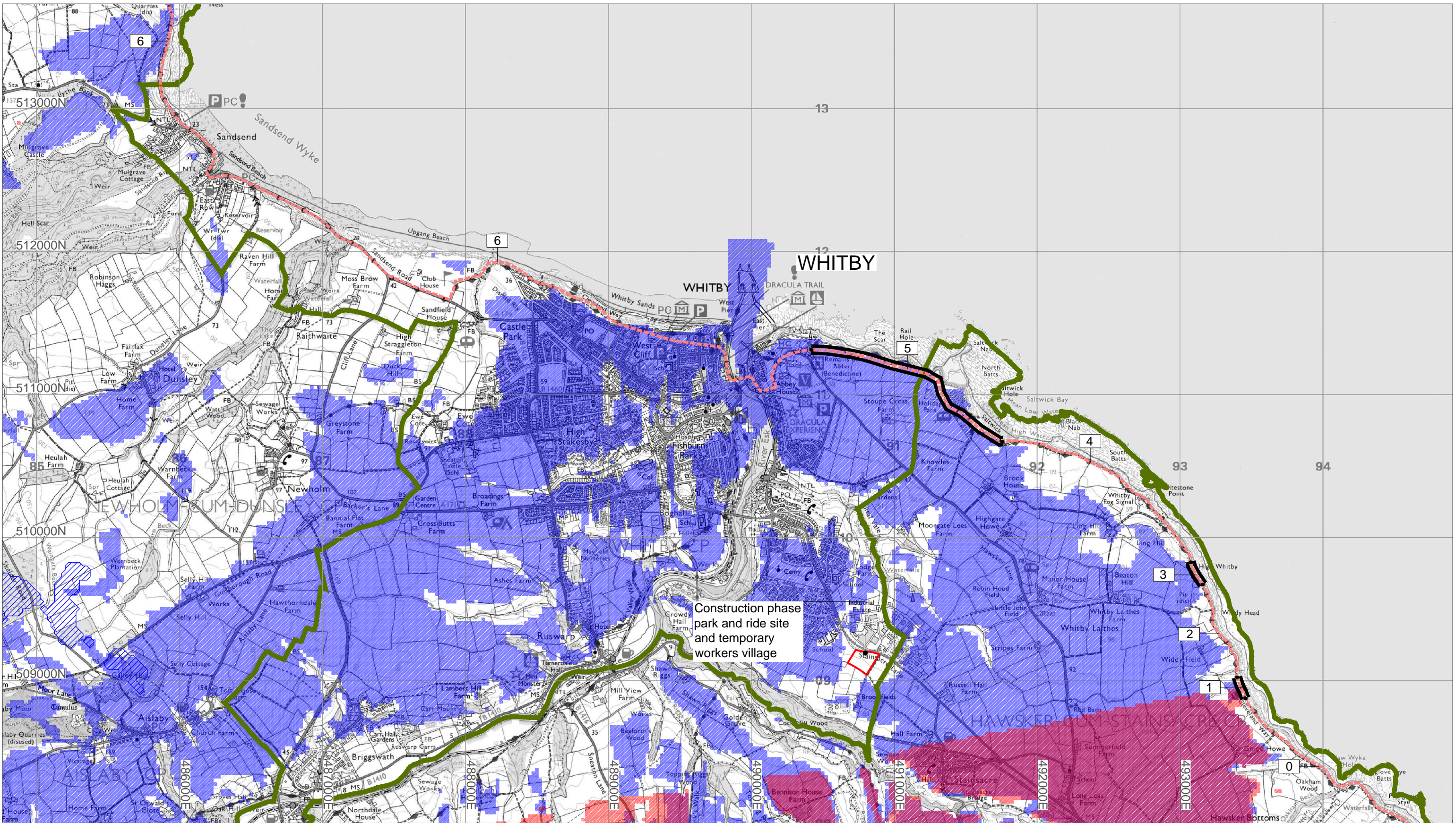
Project:	York Potash Project Cumulative Landscape & Visual Assessment
Drawing Title:	Sequential Receptor Assessment Cleveland Way National Trail (2 of 8)
Drawing Number:	2327.SEQ.CW.02
Revision:	00
Scale:	1:25,000 @ A3
Date:	September 2014
Drawn:	CW
Checked:	SW
This drawing is copyright and should not be used, amended or reproduced in any form without written consent.	

Key Plan:

Estell Warren Ltd  
5b Chevin Mill  
Leeds Road  
Otley  
LS21 1BT  
Tel: 01943 464384  
Email: [mail@estellwarren.co.uk](mailto:mail@estellwarren.co.uk)  
Web: [www.estellwarren.co.uk](http://www.estellwarren.co.uk)

**Estell Warren**  
Landscape Architecture  
**YORKPOTASH**  
A Sirius Minerals Project





- |   |   |   |
|---|---|---|
| North York Moors National Park boundary   | Proposed Bank Field wind farm ZTV       | Minehead and Lady Cross winding towers ZTV                |
| Cleveland Way National Trail  | RAF Flyingdales SSPA radar ZTV          | Minehead, Lady Cross and Lockwood Beck winding towers ZTV |
| Sections of route with views to proposed sites  | Boulby Mine dryer stack ZTV             | Lady Cross and Lockwood Beck winding towers ZTV           |
| Sections of route with filtered views to proposed sites   | Minehead winding towers ZTV             | Minehead and Lockwood Beck winding towers ZTV             |
| Table reference number (see Part 5, Appendix 22.3)  | Lady Cross Plantation winding tower ZTV | Tocketts Lythe and Lockwood Beck winding towers ZTV       |
| Representative viewpoints (underline denotes photomontage location) (see Part 5, Appendix 22.2) | Lockwood Beck winding tower ZTV         | Minehead and Tocketts Lythe winding towers ZTV            |
|   | Tocketts Lythe winding tower ZTV        |   |

Project: York Potash Project  
Cumulative Landscape & Visual Assessment

Drawing Title: Sequential Receptor Assessment  
Cleveland Way National Trail (3 of 8)

Drawing Number: 2327.SEQ.CW.03    Revision: 00

Scale: 1:25,000 @ A3    Date: September 2014    Drawn: CW    Checked: SW

This drawing is copyright and should not be used, amended or reproduced in any form without written consent.

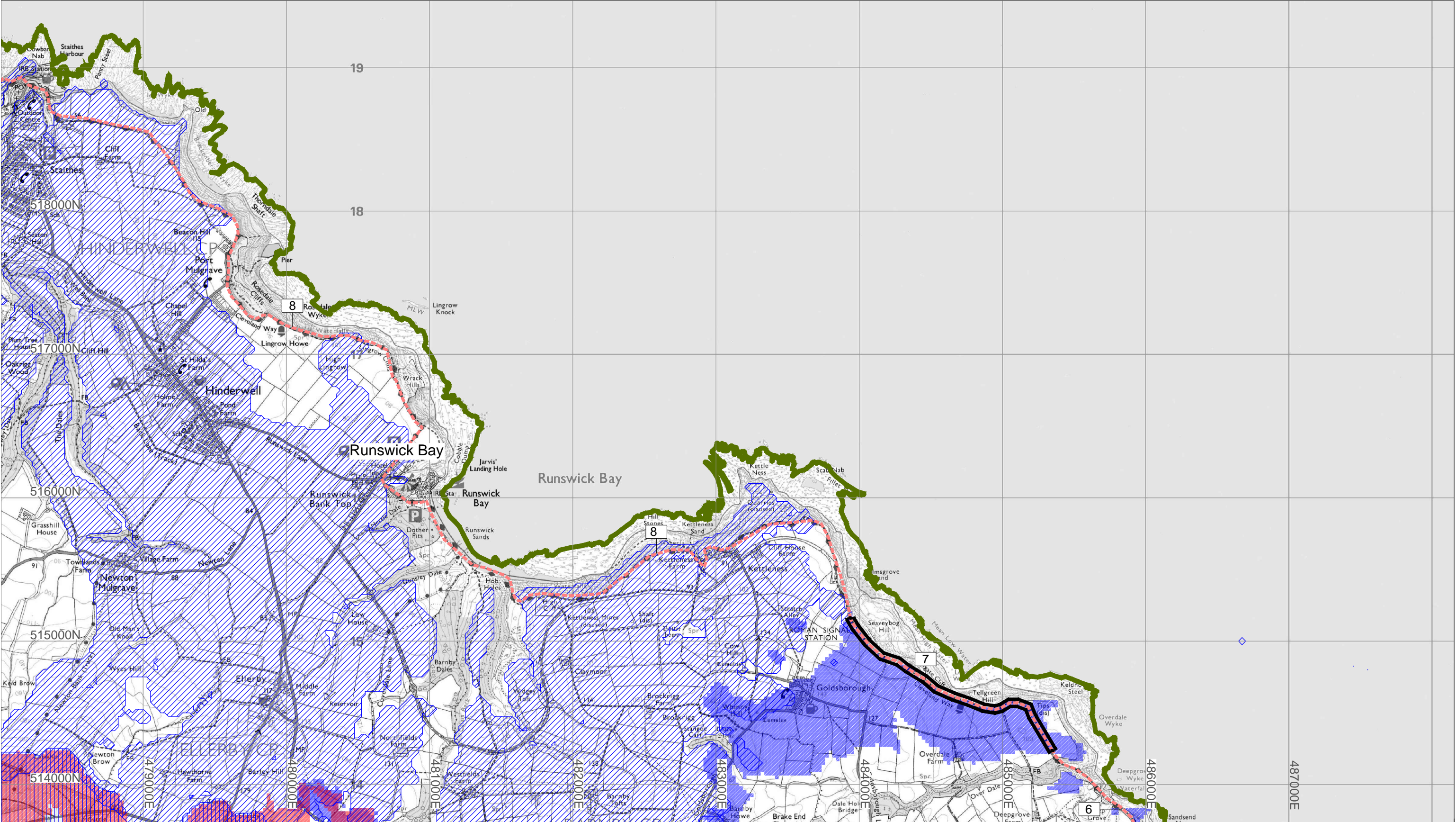
Key Plan:

Estell Warren Ltd  
5b Chevin Mill  
Leeds Road  
Otley  
LS21 1BT  
Tel: 01943 464384  
Email: mail@estellwarren.co.uk  
Web: www.estellwarren.co.uk

**Estell Warren**  
Landscape Architecture

**YORKPOTASH**  
A Sirius Minerals Project





	North York Moors National Park boundary		Proposed Bank Field wind farm ZTV		Minehead and Lady Cross winding towers ZTV
	Cleveland Way National Trail		RAF Flyingdales SSPA radar ZTV		Minehead, Lady Cross and Lockwood Beck winding towers ZTV
	Sections of route with views to proposed sites		Boulby Mine dryer stack ZTV		Lady Cross and Lockwood Beck winding towers ZTV
	Sections of route with filtered views to proposed sites		Minehead winding towers ZTV		Minehead and Lockwood Beck winding towers ZTV
	Table reference number (see Part 5, Appendix 22.3)		Lady Cross Plantation winding tower ZTV		Tocketts Lythe and Lockwood Beck winding towers ZTV
	Representative viewpoints (underline denotes photomontage location) (see Part 5, Appendix 22.2)		Lockwood Beck winding tower ZTV		Minehead and Tocketts Lythe winding towers ZTV
			Tocketts Lythe winding tower ZTV		

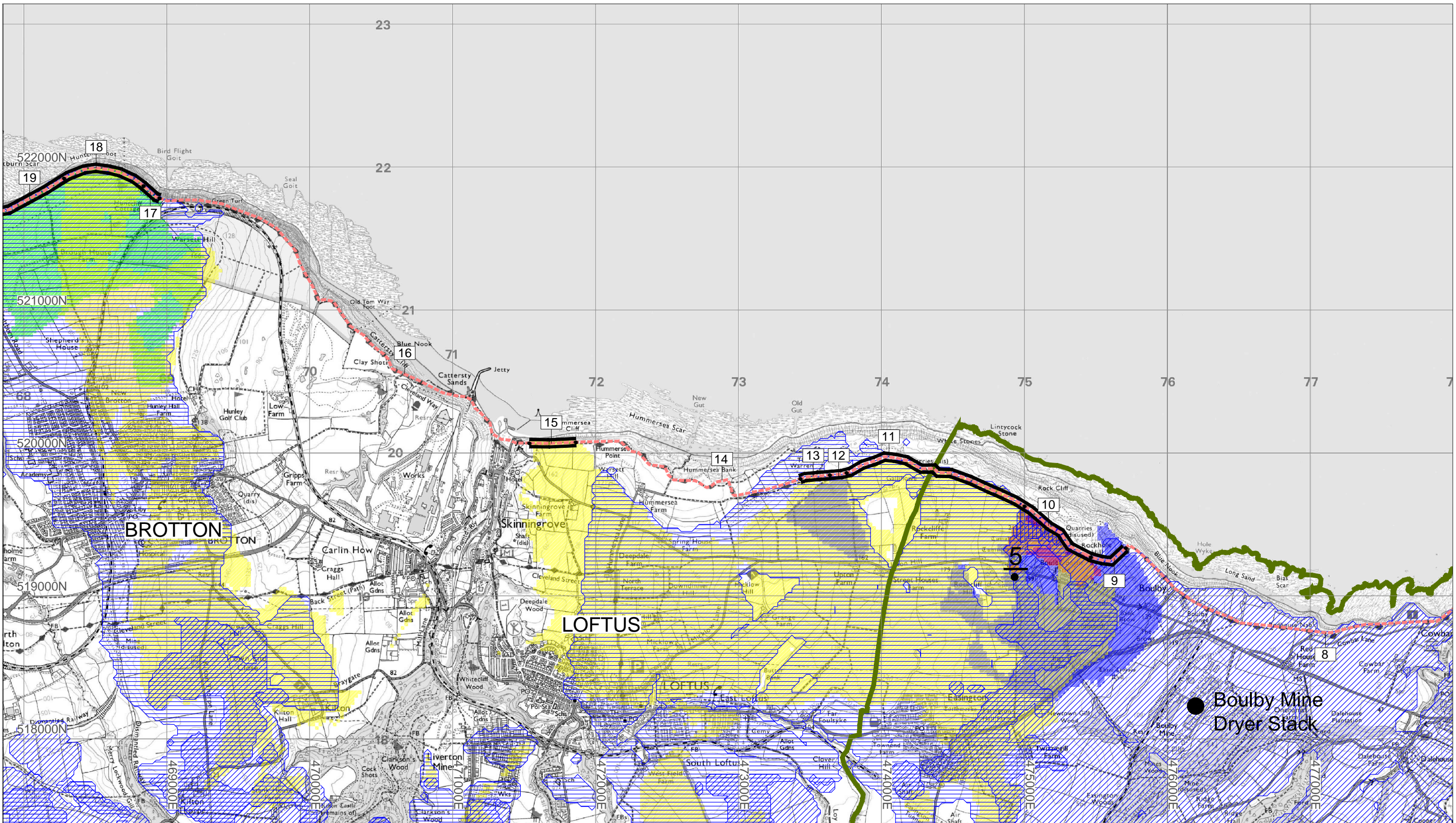
Project:	York Potash Project Cumulative Landscape & Visual Assessment
Drawing Title:	Sequential Receptor Assessment Cleveland Way National Trail (4 of 8)
Drawing Number:	2327.SEQ.CW.04
Revision:	00
Scale:	1:25,000 @ A3
Date:	September 2014
Drawn:	CW
Checked:	SW
This drawing is copyright and should not be used, amended or reproduced in any form without written consent.	

Key Plan:

Estell Warren Ltd  
5b Chevin Mill  
Leeds Road  
Otley  
LS21 1BT  
Tel: 01943 464384  
Email: [mail@estellwarren.co.uk](mailto:mail@estellwarren.co.uk)  
Web: [www.estellwarren.co.uk](http://www.estellwarren.co.uk)

Landscape Architecture  
  
A Sirius Minerals project





North York Moors National Park boundary	Proposed Bank Field wind farm ZTV	Minehead and Lady Cross winding towers ZTV
Cleveland Way National Trail	RAF Flyingdales SSPA radar ZTV	Minehead ,Lady Cross and Lockwood Beck winding towers ZTV
Sections of route with views to proposed sites	Boulby Mine dryer stack ZTV	Lady Cross and Lockwood Beck winding towers ZTV
Sections of route with filtered views to proposed sites	Minehead winding towers ZTV	Minehead and Lockwood Beck winding towers ZTV
Table reference number (see Part 5, Appendix 22.3)	Lady Cross Plantation winding tower ZTV	Tocketts Lythe and Lockwood Beck winding towers ZTV
Representative viewpoints (underline denotes photomontage location) (see Part 5, Appendix 22.2)	Lockwood Beck winding tower ZTV	Minehead and Tocketts Lythe winding towers ZTV
	Tocketts Lythe winding tower ZTV	

Project:	York Potash Project Cumulative Landscape & Visual Assessment
Drawing Title:	Sequential Receptor Assessment Cleveland Way National Trail (5 of 8)
Drawing Number:	2327.SEQ.CW.05
Revision:	00
Scale:	1:25,000 @ A3
Date:	September 2014
Drawn:	CW
Checked:	SW
This drawing is copyright and should not be used, amended or reproduced in any form without written consent.	

Key Plan:

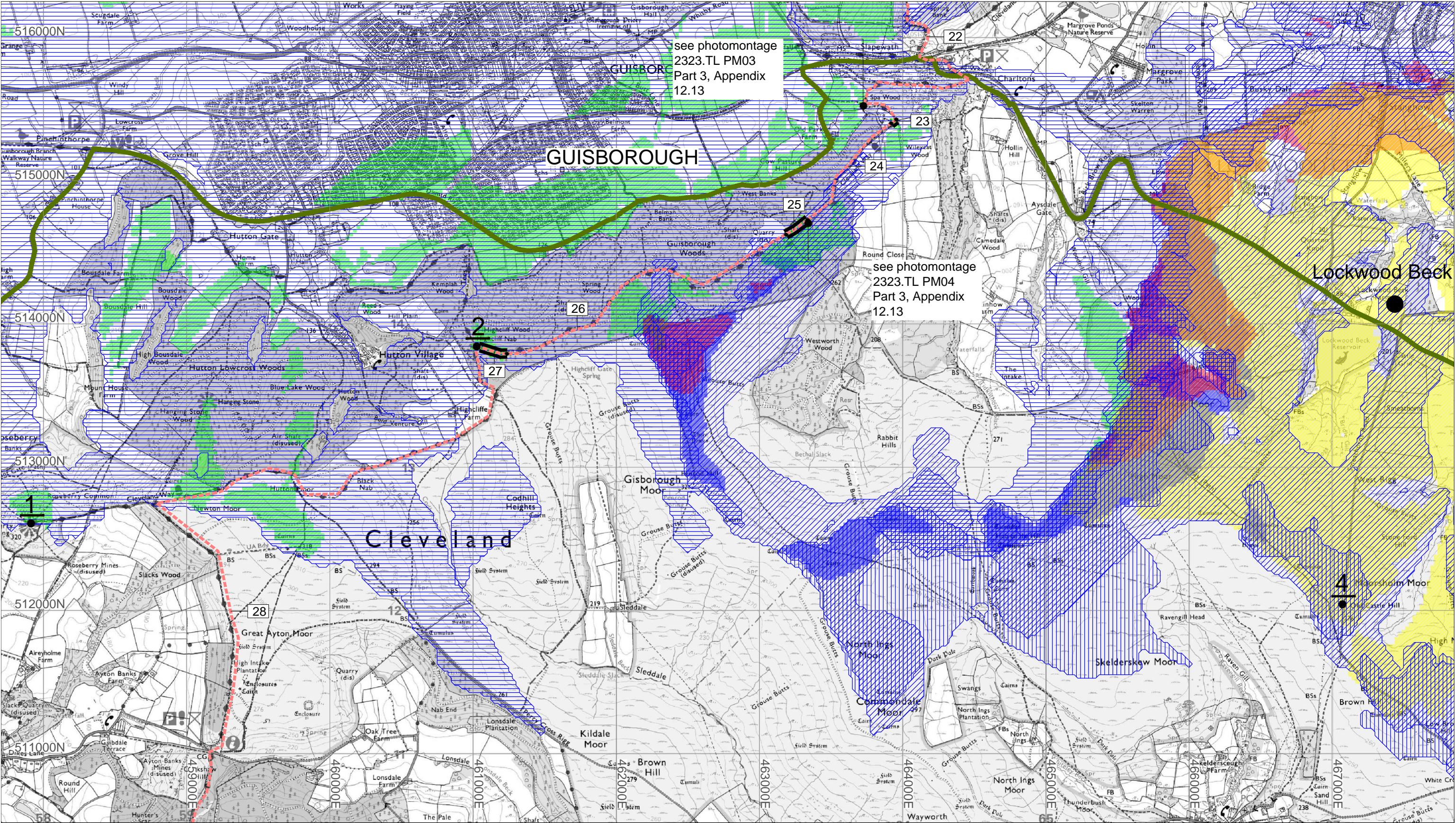
Estell Warren Ltd  
5b Chevin Mill  
Leeds Road  
Otley  
LS21 1BT  
Tel: 01943 464384  
Email: mail@estellwarren.co.uk  
Web: www.estellwarren.co.uk

Landscape Architecture  
  
YORKPOTASH  
A Sirius Minerals project









	North York Moors National Park boundary		Proposed Bank Field wind farm ZTV		Minehead and Lady Cross winding towers ZTV
	Cleveland Way National Trail		RAF Flyingdales SSPA radar ZTV		Minehead ,Lady Cross and Lockwood Beck winding towers ZTV
	Sections of route with views to proposed sites		Boulby Mine dryer stack ZTV		Lady Cross and Lockwood Beck winding towers ZTV
	Sections of route with filtered views to proposed sites		Minehead winding towers ZTV		Minehead and Lockwood Beck winding towers ZTV
	Table reference number (see Part 5, Appendix 22.3)		Lady Cross Plantation winding tower ZTV		Tocketts Lythe and Lockwood Beck winding towers ZTV
	Representative viewpoints (underline denotes photomontage location) (see Part 5, Appendix 22.2)		Lockwood Beck winding tower ZTV		Minehead and Tocketts Lythe winding towers ZTV
			Tocketts Lythe winding tower ZTV		

Project:	York Potash Project Cumulative Landscape & Visual Assessment
Drawing Title:	Sequential Receptor Assessment Cleveland Way National Trail (7 of 8)
Drawing Number:	2327.SEQ.CW.07
Revision:	00
Scale:	1:25,000 @ A3
Date:	September 2014
Drawn:	CW
Checked:	SW
This drawing is copyright and should not be used, amended or reproduced in any form without written consent.	

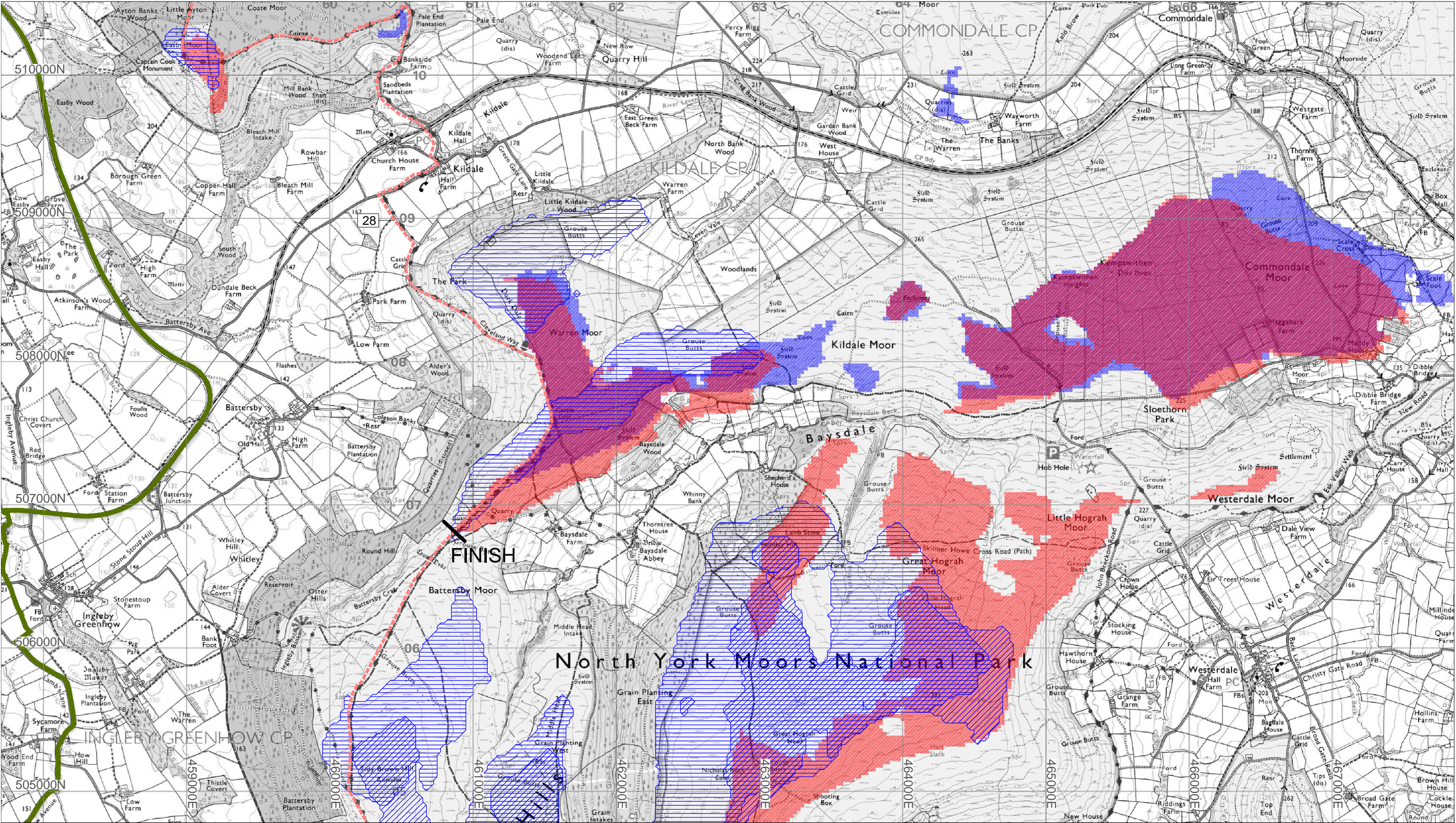
Key Plan:

Estell Warren Ltd  
5b Chevin Mill  
Leeds Road  
Otley  
LS21 1BT  
Tel: 01943 464384  
Email: [mail@estellwarren.co.uk](mailto:mail@estellwarren.co.uk)  
Web: [www.estellwarren.co.uk](http://www.estellwarren.co.uk)

**Estell Warren**  
Landscape Architecture

**YORKPOTASH**  
A Sirius Minerals project





North York Moors National Park boundary	Proposed Bank Field wind farm ZTV	Minehead and Lady Cross winding towers ZTV
Cleveland Way National Trail	RAF Flyingdales SSPA radar ZTV	Minehead, Lady Cross and Lockwood Beck winding towers ZTV
Sections of route with views to proposed sites	Boulby Mine dryer stack ZTV	Lady Cross and Lockwood Beck winding towers ZTV
Sections of route with filtered views to proposed sites	Minehead winding towers ZTV	Minehead and Lockwood Beck winding towers ZTV
Table reference number (see Part 5, Appendix 22.3)	Lady Cross Plantation winding tower ZTV	Tocketts Lythe and Lockwood Beck winding towers ZTV
Representative viewpoints (underline denotes photomontage location) (see Part 5, Appendix 22.2)	Lockwood Beck winding tower ZTV	Minehead and Tocketts Lythe winding towers ZTV
	Tocketts Lythe winding tower ZTV	

Project:	York Potash Project Cumulative Landscape & Visual Assessment
Drawing Title:	Sequential Receptor Assessment Cleveland Way National Trail (8 of 8)
Drawing Number:	2327.SEQ.CW.08
Revision:	00
Scale:	1:25,000 @ A3
Date:	September 2014
Drawn:	CW
Checked:	SW
This drawing is copyright and should not be used, amended or reproduced in any form without written consent.	

Key Plan:	
Estell Warren Ltd 5b Chevin Mill Leeds Road Otley LS21 1BT Tel: 01943 464384 Email: mail@estellwarren.co.uk Web: www.estellwarren.co.uk	
 Landscape Architecture	
 A Sirius Minerals project	